

BWG NO.	BF 46000	SH	1	REV	-
REVISIONS					
ZONE/REV	DESCRIPTION	DATE	APPROVED		

- NOTES:
1. MOUNT TERMINAL BOARD MOUNTING PANEL APPROXIMATELY WHERE SHOWN.
 2. INSTALL JUMPERS ACROSS TERMINALS 1-2, 3-4 & 5-6.
 3. REMOVE PAINT 1/4" AROUND HOLE. APPLY CONDUCTIVE GREASE.
 4. INSTALL JUMPERS ACROSS TERMINALS 1-3 & 4-6.
 5. REFERENCE SCHEMATIC DIAGRAM AS90100.

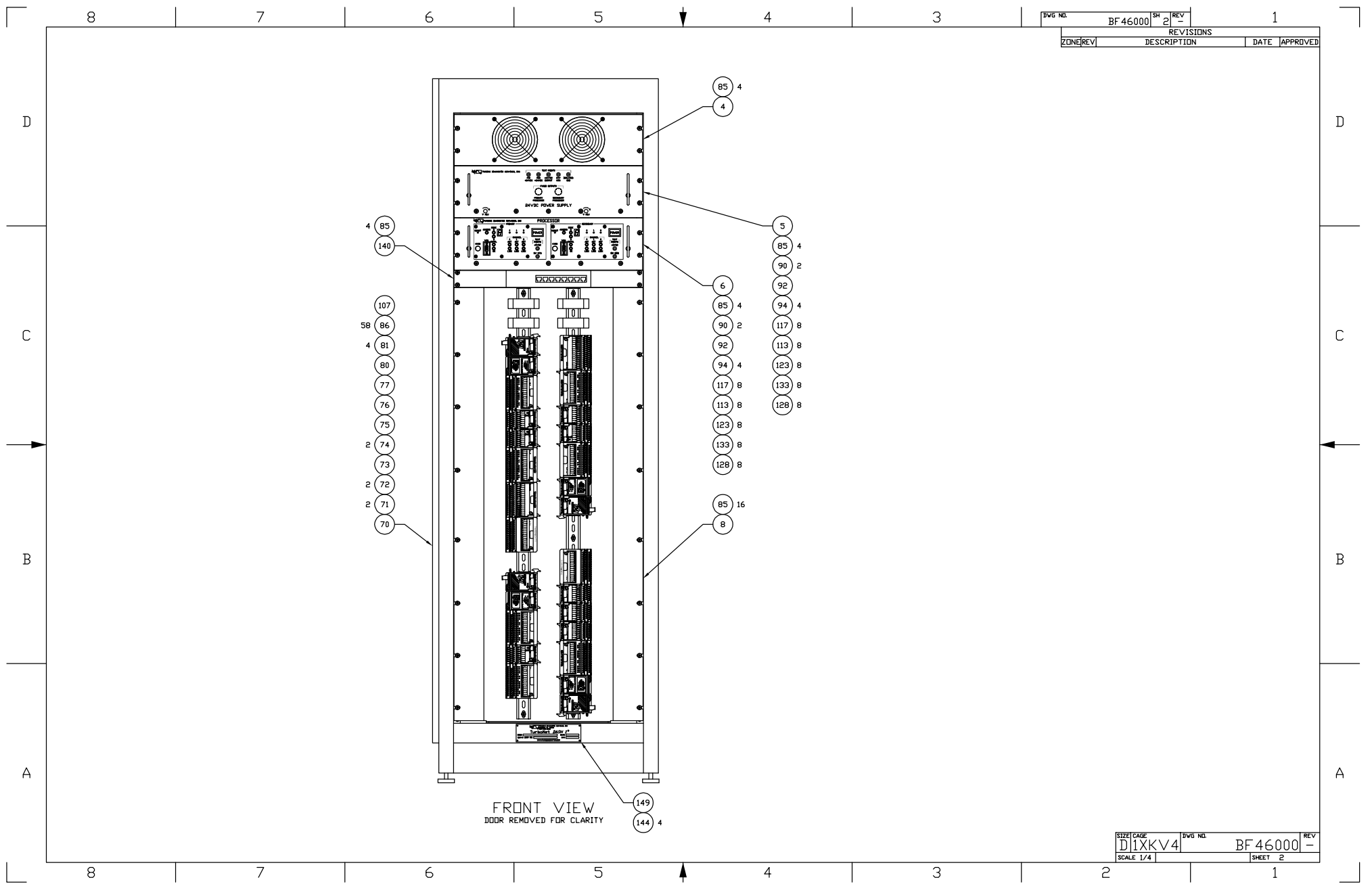
THIS DOCUMENT CONTAINS INFORMATION CONFIDENTIAL AND PROPRIETARY TO TURBINE DIAGNOSTIC SERVICES. IT MAY NOT BE, IN PART OR WHOLE, COPIED, REPRODUCED OR TRANSFERRED FOR ANY PURPOSE WITHOUT WRITTEN CONSENT BY TURBINE DIAGNOSTIC SERVICES.

CUSTOMER	WHEELABRATOR
LOCATION	PINELLAS
UNIT	TG2

SEE SEPARATE PARTS LIST

UNLESS OTHERWISE SPECIFIED DIMENSIONS ARE IN INCHES TOLERANCES ARE: FRACTIONS DECIMALS ANGLES				CONTRACT NO.		TURBINE DIAGNOSTIC SERVICES, INC 2521 SUCCESS DR UNIT 2 ODESSA, FL 33556	
TREATMENT				APPROVALS	DATE	TITLE	
FINISH				DRAWN	B.E. WALSH	05-08-03	CABINET ASSEMBLY, CONTROL
DESIGNER				CHECKED	T. DASCH	05-10-03	SIZE/CAGE
PART NO.				APPROVED	E.J. COLON	05-10-03	BWG NO.
NEXT FINAL				SCALE 1/4"		REV	
NEXT ASSY.				SHEET 1 OF 3		BF 46000	
USED ON							
SIMILAR TO							
ACT VT							
CALE WT							
DASH NO.							
QTY REQD PER ASSY							
APPLICATION							

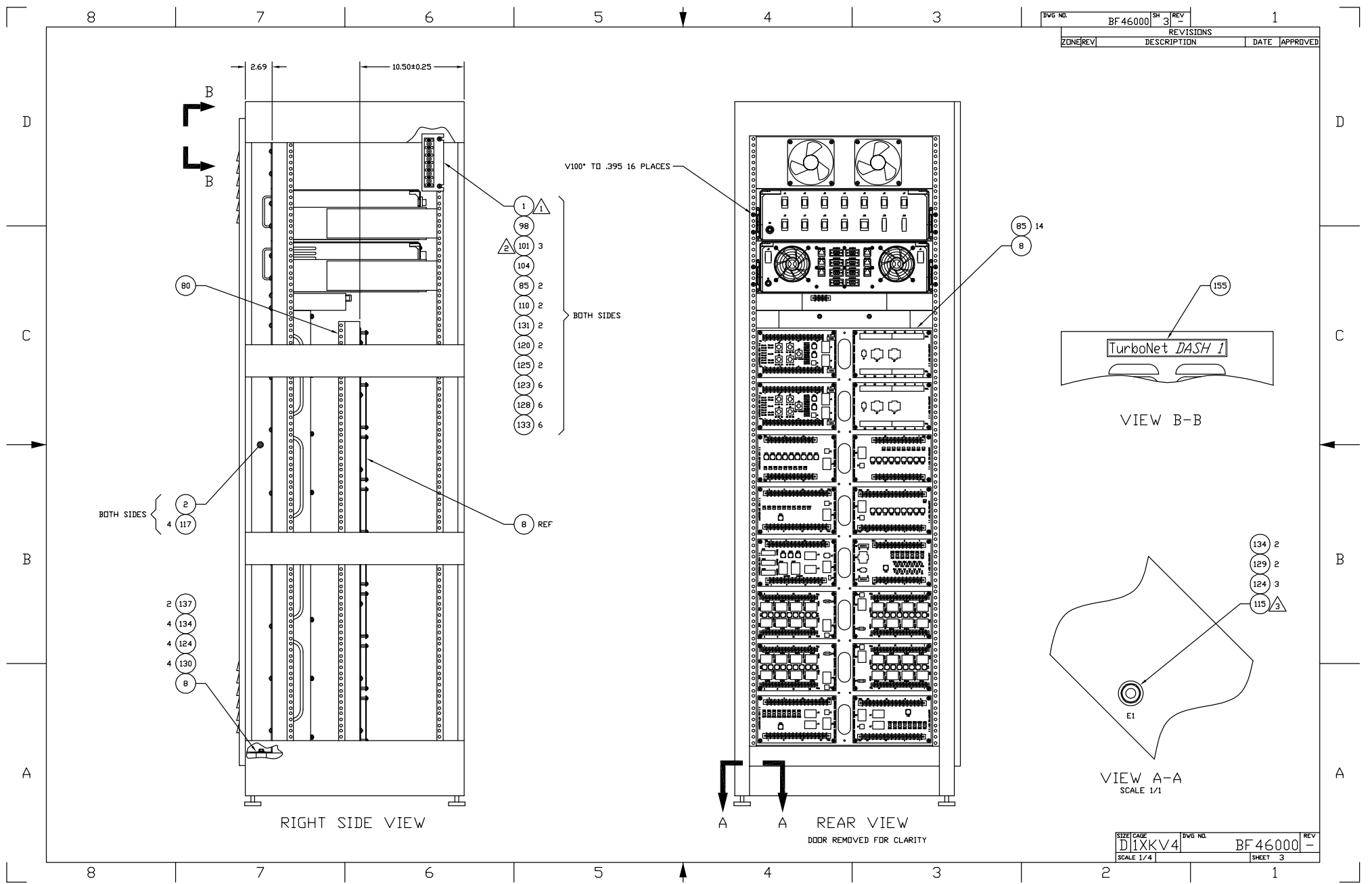
DWG. NO.	BF 46000	SH	2	REV	-
REVISIONS					
ZONE	REV	DESCRIPTION	DATE	APPROVED	



FRONT VIEW
DOOR REMOVED FOR CLARITY

SIZE	CAGE	DWG. NO.	REV
D	1XKV4	BF 46000	-
SCALE	1/4"	SHEET	2

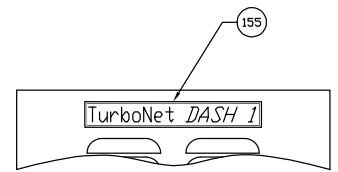
DWG. NO.	BF 46000	SH	3	REV	-
REVISIONS					
ZONE/REV	DESCRIPTION	DATE	APPROVED		



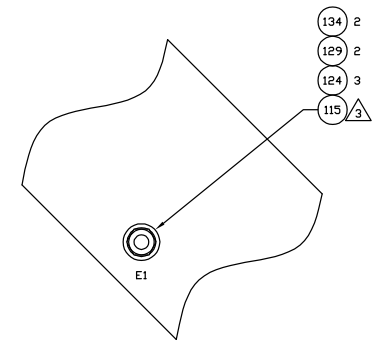
- V100* TO .395 16 PLACES
- 1 1
 - 98
 - 2 101 3
 - 104
 - 85 2
 - 110 2
 - 131 2
 - 120 2
 - 125 2
 - 123 6
 - 128 6
 - 133 6
- BOTH SIDES

- BOTH SIDES
- 2
 - 4 117
 - 8 REF

- 2 137
- 4 134
- 4 124
- 4 130
- 8



VIEW B-B



VIEW A-A
SCALE 1/1

A A
REAR VIEW
DOOR REMOVED FOR CLARITY

SIZE	CAGE	DWG. NO.	REV
D	1XKV4	BF 46000	-
SCALE 1/4		SHEET 3	