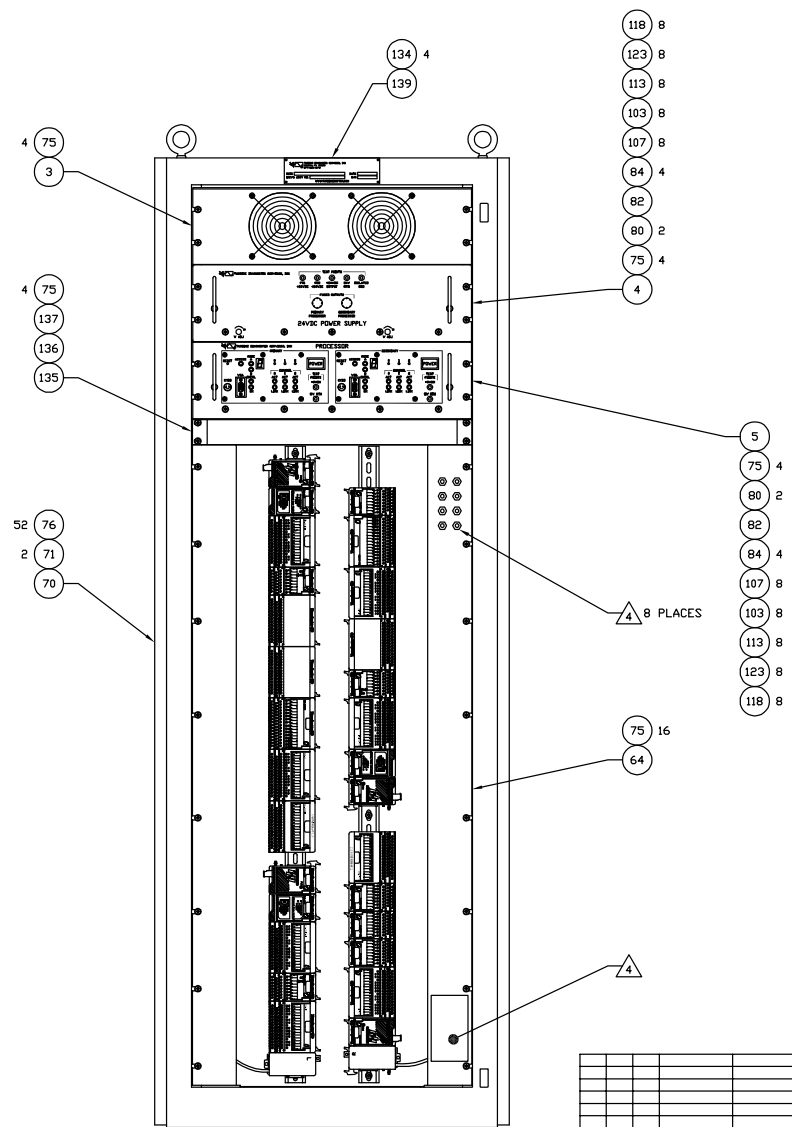


BWG NO.	BC41000	SH	1	REV	-
ZONE/REV		REVISIONS		DATE	APPROVED

- NOTES:
- 1 MOUNT TERMINAL BOARD MOUNTING PANEL APPROXIMATELY WHERE SHOWN.
 - 2 INSTALL JUMPERS ACROSS TERMINALS 1-2, 3-4 & 5-6
 - 3 REMOVE PAINT 1/4" AROUND HOLE. APPLY CONDUCTIVE GREASE.
 - 4 HARDEND CONVERTER SWITCH AND FIBER-OPTIC CONNECTORS ARE CUSTOMER SUPPLIED AND INSTALLED.
 5. REFERENCE SCHEMATIC DIAGRAM BC90100.

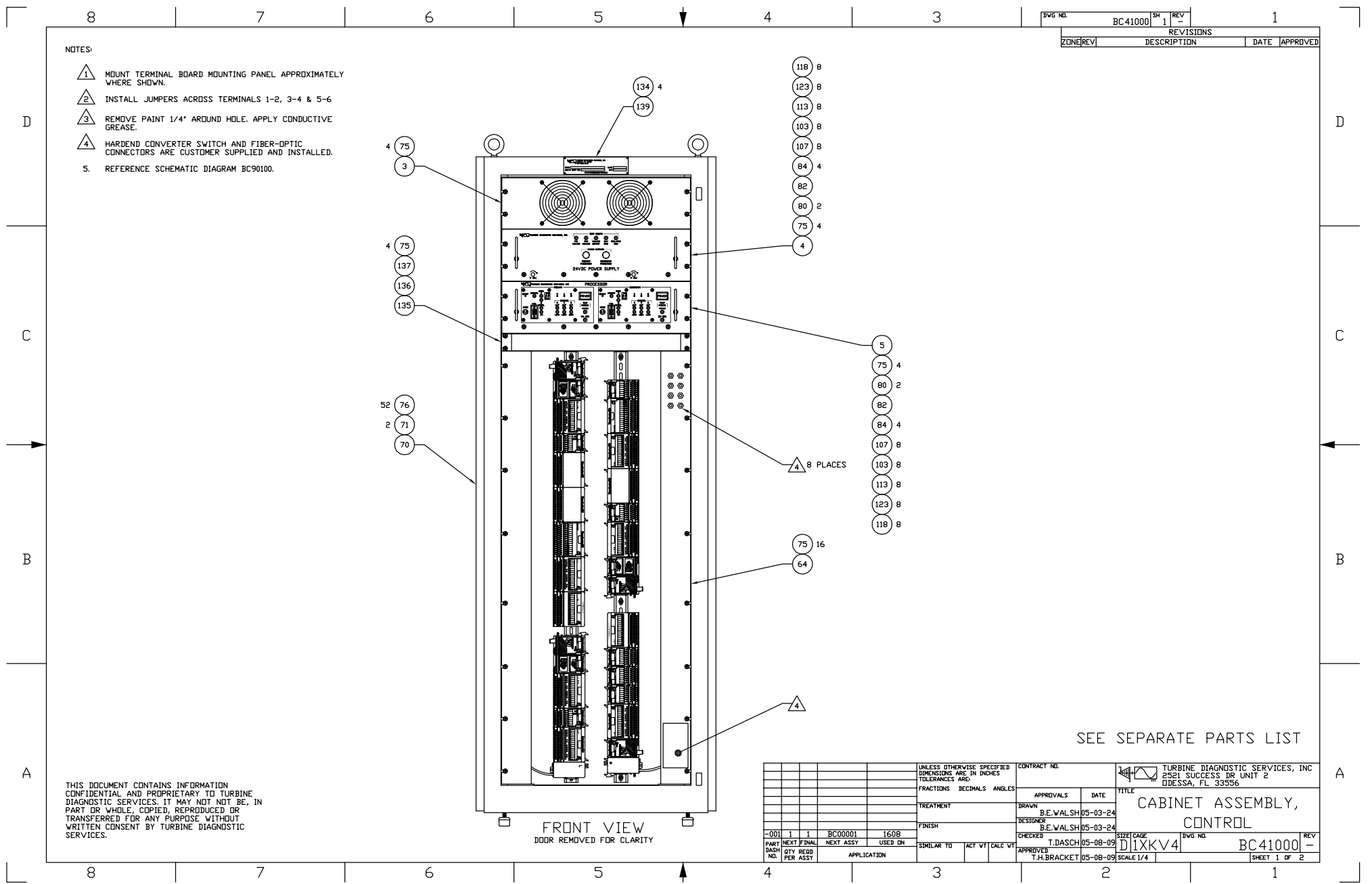


FRONT VIEW
DOOR REMOVED FOR CLARITY

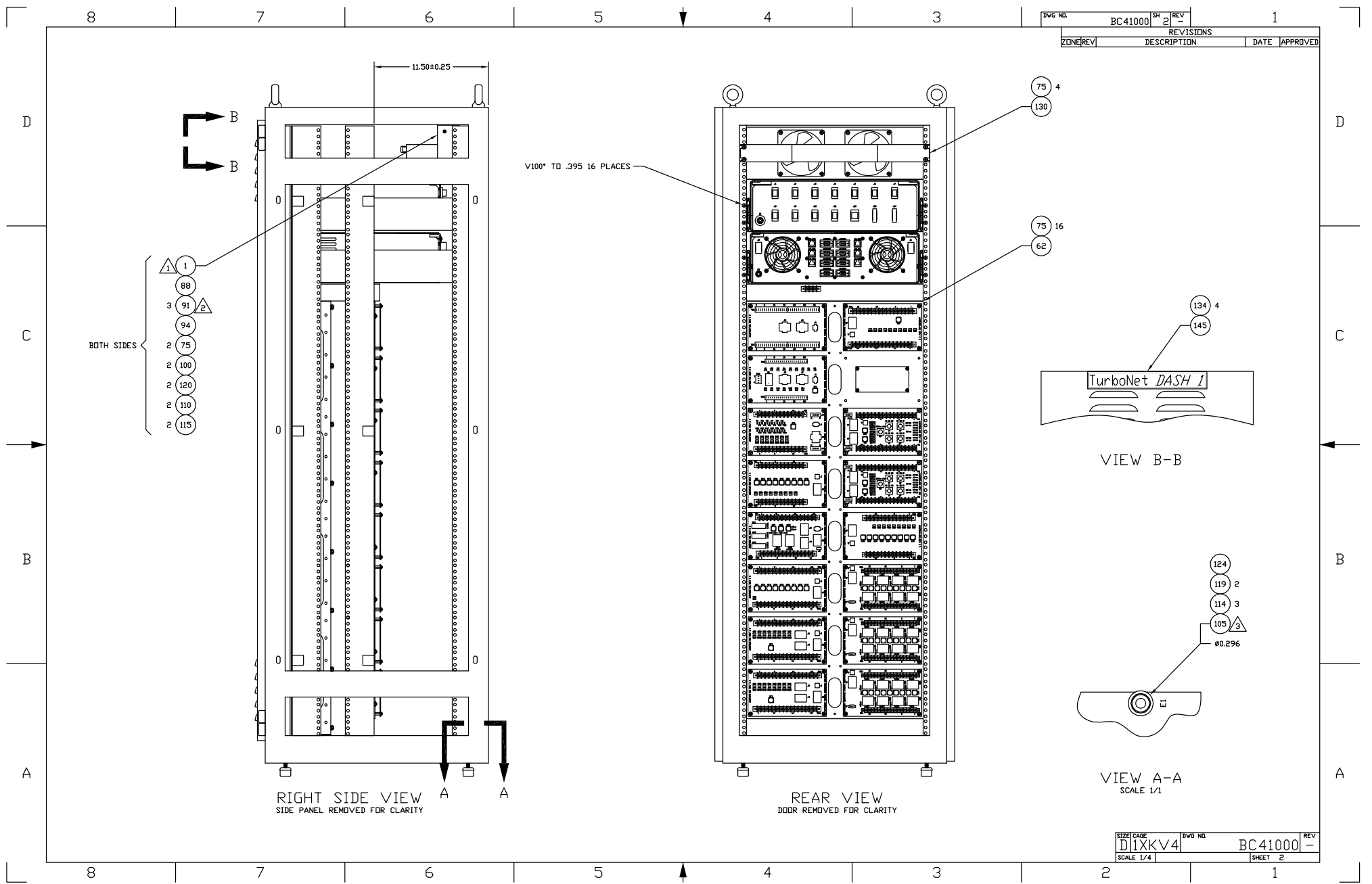
SEE SEPARATE PARTS LIST

THIS DOCUMENT CONTAINS INFORMATION CONFIDENTIAL AND PROPRIETARY TO TURBINE DIAGNOSTIC SERVICES. IT MAY NOT BE, IN PART OR WHOLE, COPIED, REPRODUCED OR TRANSFERRED FOR ANY PURPOSE WITHOUT WRITTEN CONSENT BY TURBINE DIAGNOSTIC SERVICES.

UNLESS OTHERWISE SPECIFIED DIMENSIONS ARE IN INCHES TOLERANCES ARE:				CONTRACT NO.		TURBINE DIAGNOSTIC SERVICES, INC 2521 SUCCESS DR UNIT 2 ODESSA, FL 33556	
FRACTIONS DECIMALS ANGLES				APPROVALS	DATE	TITLE	
TREATMENT				DRAWN B.E.WALSH 05-03-24		CABINET ASSEMBLY, CONTROL	
FINISH				DESIGNER B.E.WALSH 05-03-24		SCALE	
PART NO. QTY PER ASSY				CHECKED T.DASCH 05-08-09	APPROVED T.H.BRACKET 05-08-09	SIZE CASE D1XKV4	BWG NO. BC41000
APPLICATION				SIMILAR TO		REV -	
				ACT VT		SHEET 1 OF 2	



DWG. NO.	BC41000	SH	2	REV	-
REVISIONS					
ZONE/REV	DESCRIPTION	DATE	APPROVED		



SIZE/CASE	D 1XKV4	DWG. NO.	BC41000	REV	-
SCALE	1/4	SHEET	2		