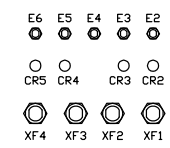


ZONE	REV	DESCRIPTION	DATE	APPROVED
A		CHANGED CONNECTOR J1-J14 P/N & JUMPER CHART. ADDED CONNECTORS J101, J102, P101 & P102.	03-02-17	E.J.COLON
B		REPLACED TB2, RESISTOR TERMINAL BOARD, WITH PWA AA87137-001. ADDED FUSES FOR INCOMING POWER AND LED INDICATORS.	05-06-06	

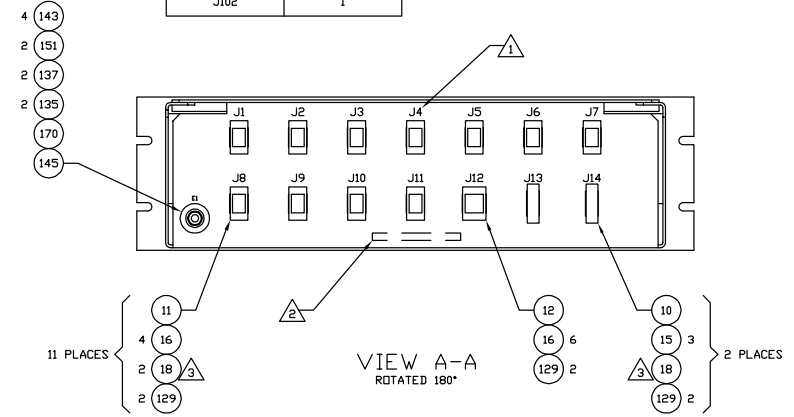
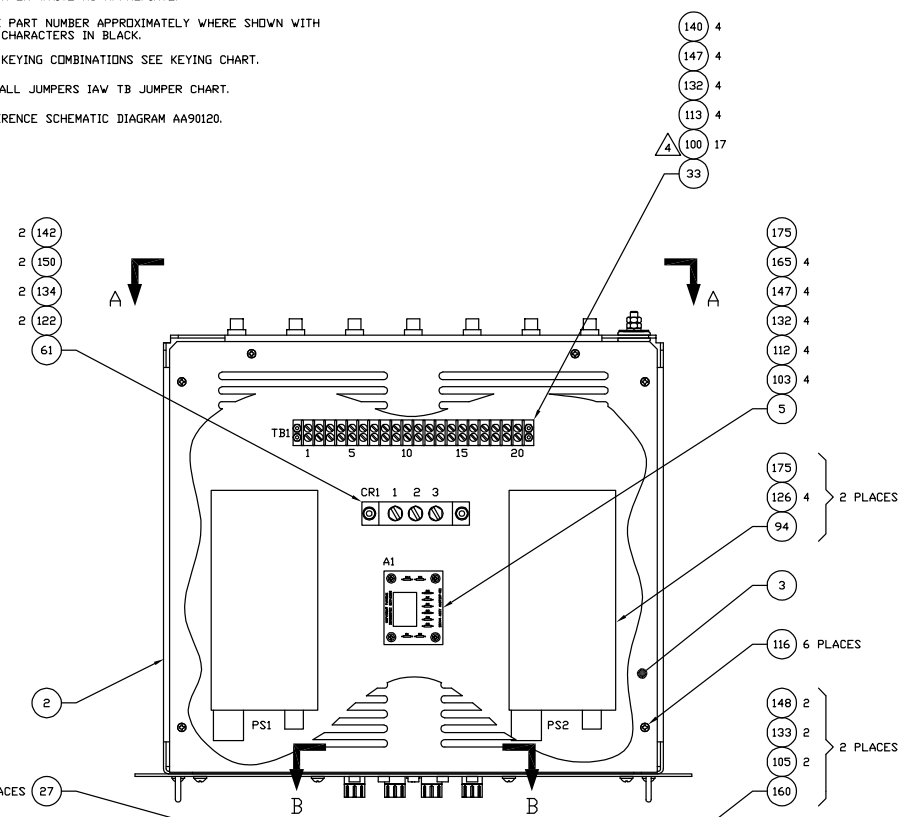
- NOTES:
- MARK REFERENCE DESIGNATIONS AND TERMINAL NUMBERS APPROXIMATELY WHERE SHOWN WITH .125 CHARACTERS IN BLACK OR WHITE AS APPROPRIATE.
  - MARK PART NUMBER APPROXIMATELY WHERE SHOWN WITH .125 CHARACTERS IN BLACK.
  - FOR KEYING COMBINATIONS SEE KEYING CHART.
  - INSTALL JUMPERS IAW TB JUMPER CHART.
  - REFERENCE SCHEMATIC DIAGRAM AA90120.

TB JUMPER CHART
JUMP TERMINALS
1 THRU 6
7 THRU 13
14 THRU 20

KEYING CHART	
CONNECTOR	KEY LOCATION
J1	1 & 2
J2	1 & 3
J3	1 & 4
J4	1 & 5
J5	1 & 6
J6	2 & 3
J7	2 & 4
J8	2 & 5
J9	2 & 6
J10	3 & 4
J11	3 & 5
J12	-
J13	4
J14	1
J101	6
J102	1



VIEW B-B  
ROTATED 180°



VIEW A-A  
ROTATED 180°

THIS DOCUMENT CONTAINS INFORMATION CONFIDENTIAL AND PROPRIETARY TO TURBINE DIAGNOSTIC SERVICES. IT MAY NOT BE, IN PART OR WHOLE, COPIED, REPRODUCED OR TRANSFERRED FOR ANY PURPOSE WITHOUT WRITTEN CONSENT BY TURBINE DIAGNOSTIC SERVICES.

SEE SEPARATE PARTS LIST

UNLESS OTHERWISE SPECIFIED DIMENSIONS ARE IN INCHES TOLERANCES ARE:				CONTRACT NO.		TURBINE DIAGNOSTIC SERVICES, INC 2521 SUCCESS DR UNIT 2 ODESSA, FL 33556	
FRACTIONS DECIMALS ANGLES				APPROVALS	DATE	TITLE	
TREATMENT				DRAWN B.E.WALSH 02-07-30		CHASSIS ASSEMBLY, POWER SUPPLY	
FINISH				DESIGNED B.E.WALSH 02-07-30		SIZE/CAGE DWG NO. REV	
-001 1 1 AA41000 1378				CHECKED T.DASCH 02-08-20		D1XKV4 AA31200 B	
PART NEXT FINAL NEXT ASSY USED ON				APPROVED E.J.COLON 02-08-20		SCALE 1/2 SHEET 1 OF 1	
APPLICATION				SIMILAR TO		ACT VT CALE WT	